



# SP3100

**OPERATION MANUAL | SPARE PARTS LIST**

***PNEUMATIC TENSIONER FOR STEEL STRAPPING***

**CHOKE COLLAR  
OPERATING VERSION**



CE

CE

***READ ALL INSTRUCTIONS BEFORE OPERATING THE TOOL  
AVANT D'UTILISER L'APPAREIL LIRE LA NOTICE D'INSTRUCTIONS  
LEA LAS INSTRUCCIONES ANTES DE UTILIZAR EL APARATO***

**GREENBRIDGE**

6277 HEISLEY ROAD, MENTOR, OHIO 44060

PHONE: 440.357.1500, FAX: 440.352.9553

[WWW.GREENBRIDGE.COM](http://WWW.GREENBRIDGE.COM)

**ED. 10/21**



## TABLE OF CONTENTS

- 1) Safety instructions
- 2) Technical data
- 3) Warranty and liability
- 4) Installation
- 5) Operating elements
- 6) Operation
- 7) Servicing and cleaning
- 8) Troubleshooting
- 9) Layout – spare parts list

### 1) SAFETY INSTRUCTIONS



READ THE OPERATING INSTRUCTIONS CAREFULLY



WHEN OPERATING THE TOOL, WEAR EYE, FACE AND HAND SAFETY PROTECTION



GENERAL SAFETY INSTRUCTIONS:

The tool must be used by properly trained people. Failure to follow the operating instructions or improper use could cause strap breakage, injuries, or package damages.

Check tool daily, do not use tool with worn or damaged parts. Use original spare parts for replacement. Never modify any tool part.

Do not put fingers, hands or other body parts between the strap and package during the cycle.

It is your responsibility to check the seal joints made by your tool. Training about the weld time adjustment will be useful to check the seal quality in order to avoid severe injury. Never move goods with bad quality seals. Only use specific strap dispenser to dispense the strap. Keep your working area clean and always use the tool in good balance and safety conditions. Never use straps as a means of pulling or lifting goods.

Always use a proper safety strap cutter and keep other people and yourself at a safe distance from strap, always stand to side of strap, away from direction of strap trajectory once cut. Hold the upper strap portion and pay attention that the lower strap will snap forward away from you.

Improper operation, excessive tensioning, use of non-recommended strap, or sharp corners on the package could cause a loss of strap tension and/or strap breakage that could lead to packaging failure or injury. The following is recommended; use edge protectors if package has sharp corners, place the strap correctly around a properly positioned package, stand in safety position (on one side of strap) during strapping cycle, and use the correct strap quality, width, thickness, and break strength as recommended in this manual.

Please save this manual, as it is a part of the tool. This tool is manufactured without any substances which could be dangerous to health. National instructions must be observed for disposal of all the parts.



GENERAL SAFETY INSTRUCTIONS FOR COMPRESSED AIR:

Never operate this tool using bottled air or other gas source. Do not exceed the air pressure range as shown in this operation manual. For all adjustments, repairs or cleaning of the tool, always disconnect air supply. Always use dry, clean and lubricated compressed air.

## 1) TECHNICAL DATA

**DESCRIPTION OF THE TOOL:** The tool model SP3100 is designed to tension steel strap. The strap is fed around the package manually and inserted in the tool and tensioned as shown in the instructions.

TOOL SIZE		
Length:		340mm – 13.4"
Width:		115mm – 4.5"
Height:		90mm – 3.5"
Weight:		4kg – 8.8lbs (4.3Kg-9.5 lbs. with choke collar)

AIR REQUIREMENT		
Pressure Range:		78-99 psi
Air Consumption:		25 cuft/min
PERFORMANCES		
Max. Tension force:		15000N
Tensioning speed:		6mt/m

### CHART OF TYPES:

ITEM	MODEL	STRAP	THICKNESS
T449941 Button T449942 Choke collar	SP3100-3/4" – 1 1/4"	R 850 - 1100N/mm2	0.024" – 0.043"

## 2) WARRANTY CONDITIONS AND LIABILITY

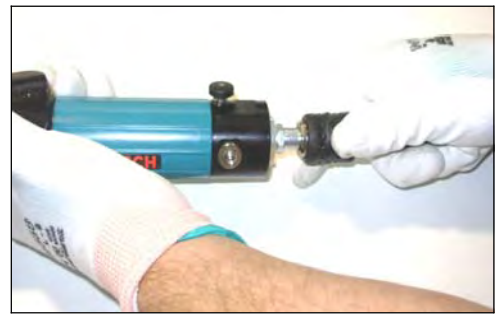
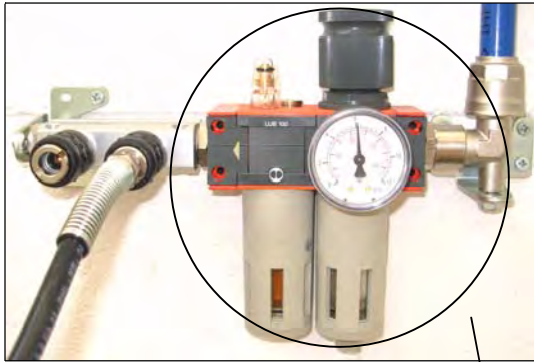
Greenbridge warrants all its tools and battery chargers during a period of 6 months from the shipping date document. Wear parts are warranted for 45 days, otherwise wear parts are excluded from regular warranty, wear parts are shown on spare parts list (in tool manual).

Warranty includes free replacement parts. The warranty is not valid in case of improper use, lack of maintenance, tampering, arbitrary modifications and reparations, use of non-original parts, disregard of instructions of the operation manual, or missing serial number. No compensation can be claimed for production shutdowns and for damages to people and objects due to tool defects. Greenbridge reserves the right to modify the tools and documentation without any obligation to update previous ones.

Greenbridge warrants all its batteries during a period of 120 days from the shipping date document. The manufacturer is committed to replace it with a free battery only when there are manufacturing defects that make it unfit for use.

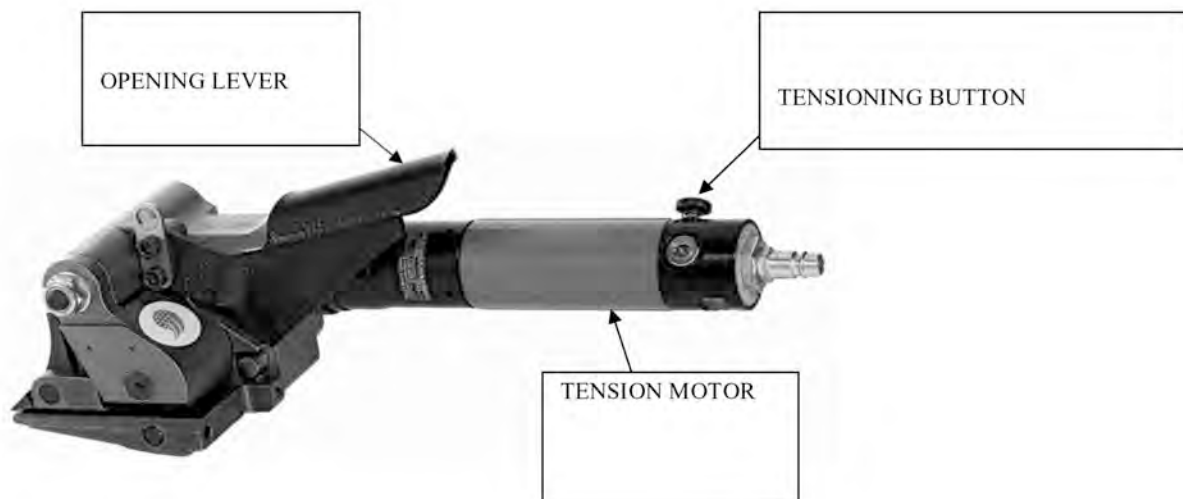
### 3) INSTALLATION

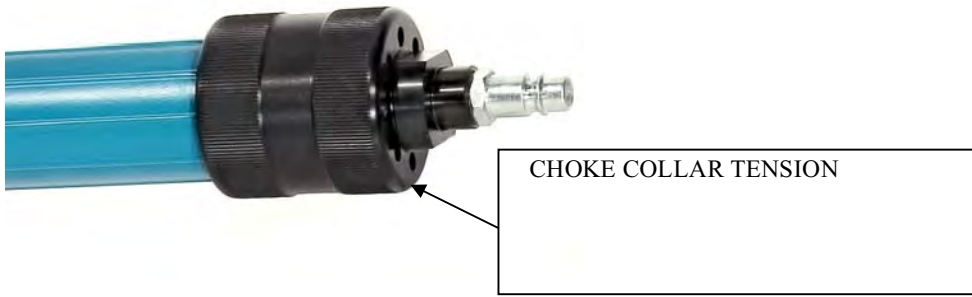
It is recommended to always use a dryer unit near the compressor and a filter-regulator-lubricator unit with pressure gauge (Polychem part # 200-0025) close to the tool air connection to avoid water and dirt in the valves or in the pneumatic motors. Connect the tool to air with quick connector 1/4" and use minimum 8mm or 3/8" internal diameter pipe; max length for flexible pipe 10 m between tool and regulator group. Check that your compressor / air distribution plant is able to supply the right air quantity as shown in the operation manual without losing pressure.



200-0025

### 5) OPERATING ELEMENTS AND ADJUSTMENTS





### **Adjusting Strap Tension**

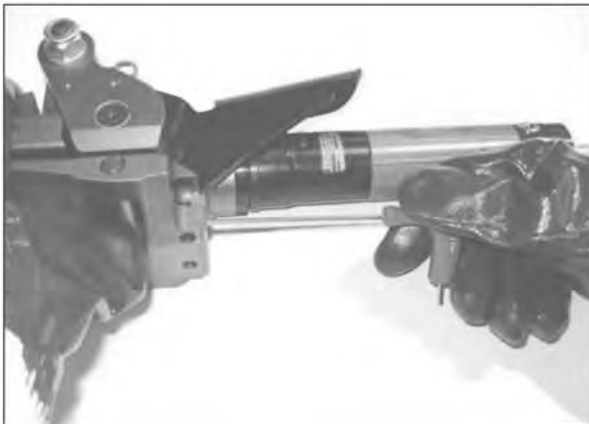
The maximum strap tension can be adjusted with a screwdriver by turning the screw as shown in pic.A, on pneumatic motor. Turning clockwise the tension will be decreased; turning counter clockwise the tension will be increased.

( A )

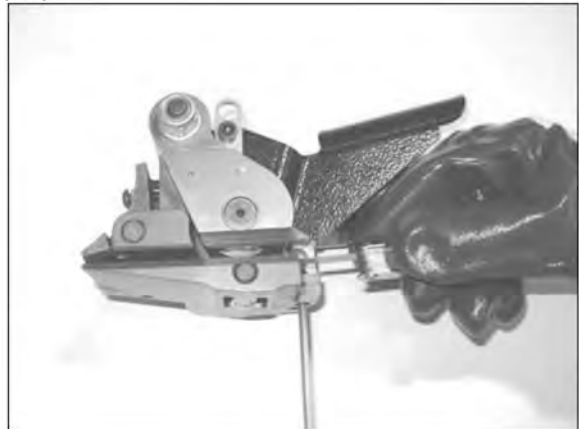


### **Feed Wheel Gap Adjustment**

(B1)



(B2)



It is possible to adjust the gap of the feed-wheel in order to change the feed wheel pressure on the strap; First unscrew the locking screw (**pic.B1**) then turn the regulation screw so that the standard feed-wheel gap is 0.1-0.2mm (0.0039"-0.0078"). Turning the screw clockwise will decrease the gap, and turning the screw counter clockwise will increase the gap (**pic.B2**), after adjusting the gap tighten the locking screw (**pic.B1**).

## 6) OPERATION

Make the strap slip into the seal and wrap it up around the package; then make strap bottom pass a second time into the seal and bend it (**pic.C1**); push opening lever to open the tool and then insert top strap (**pic.C2**), press tensioning button (for choke collar model turn it in clockwise) to tighten strap and hold it until tension is done (**pic.C3**); When tension is complete use the SP6100 series tool to seal the strap (**pic.C4**); after the strap is sealed move the tool up and down until the strap is cut off (**pic.C5**). Then check to make sure the seal is sufficient (**fig. C6**).

(C1)



(C2)



(C3)



(C4)



(C5)

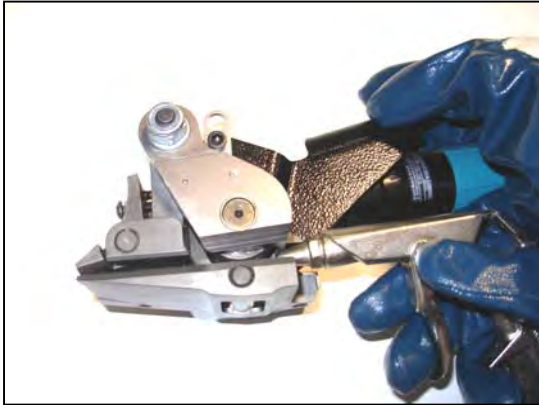


(C6)



## (7)SERVICING - CLEANING

**DISCONNECT THE TOOL FROM THE AIR LINE BEFORE PERFORMING ANY SERVICE:** Clean with compressed air under the wheel and tension foot as shown in the picture.



## 7) TROUBLESHOOTING

PROBLEM
REMEDY
<b>Not enough strap tension</b>
Check the air pressure (min.78 psi) Check if the filter / lubricator group is damaged or dirty. Check if the pneumatic motor is damaged or dirty (contact the after sale service). Check the tension adjusting screw on the pneumatic motor
<b>The feed wheel slides and mills the strap</b>
Check if the feed wheel is dirty or damaged Adjust the gap between feed wheel and bottom plate (around 0,2mm—0.008")
<b>The seal is damaged during the tension cycle</b>
Too much tension force—adjust the motor power. Check on foot if the seal support points are damaged or worn out. Check if the strap characteristics are right for the strapping tool and application
<b>The tensioned strap is sideways and bent</b>
Adjust the motor power—too much tension force. Check if the strap characteristics are right for the strapping tool
<b>Air leaking</b>
Check the air connection. Gaskets may need replaced. (contact the after sale service)
<b>The strap is not cut</b>
Check if the strap characteristics are right for the strapping tool. Check if the front movable foot edge is damaged or worn out



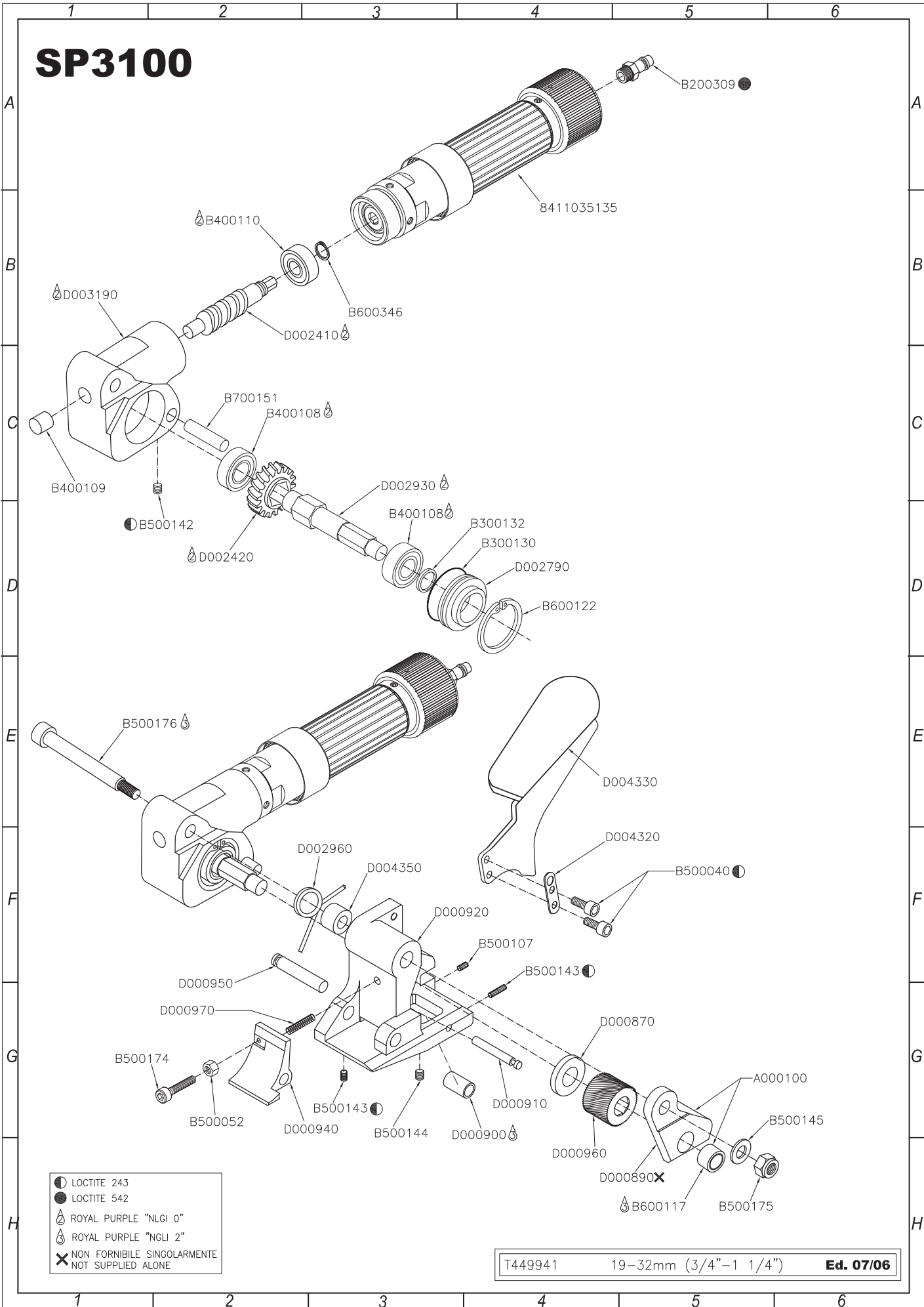
## 9) LAYOUT-SPARE PARTS LIST

Ed. 06/17

GREENBRIDGE PART #	ITEM	DESCRIPTION	QTY.		
189829	A000100	SHAFT SUPPORT ASSEMBLED	1		
189105	B200309	GLUTCH MALE 1/4"	1		
189830	B300130	O-RING OR3162 (D41)	1		
189831	B300132	STOP OIL G 17X23X3	1		
189608	B400108	BEARING 6003/C3	2		
189832	B400109	ROLL BEARING BK1012	1		
189833	B400110	BEARING 7202	1		
189141	B500040	SCREW M6x16 UNI5931	2		
189732	B500052	NUT M6 UNI5588	1		
189834	B500107	SCREW M5x6 UNI5927	1		
189835	B500142	SCREW M8x1x10 UNI5923	1		
189819	B500143	SCREW M6x6 UNI5927	2		
189836	B500144	SCREW M8x1x14 UNI5923	1		
189837	B500145	WASHER M10 UNI6592	1		
189733	B500174	SCREW M6x16 ISO7380	1		
189838	B500175	AUTO LOCKNUT M10 DIN985	1		
189839	B500176	SCREW Ø12 M10x12x90 ISO7379	1		
189611	B600117	BUSHING BMC 141615	1		
189840	B600122	INT. SEEGER J47 U.7437 R150	1		
190060	B600346	CIRCLIP D15 UNI 7435	1		
189843	B700151	CYL. PIN TMP 10X60 DIN6325	1		
189846	D000870	SPACER	1		
190127	D000900	ROLLER	1	§	
189770	D000910	ROLLER PIN	1		
189847	D000920	FOOT	1		
189848	D000940	SEAL STOP	1		
189849	D000950	MOVABLE PIN FOOT	1		
190128	D000960	FEEDWHEEL	1	§	*
189690	D000970	SPRING 0,7x25	1		
189850	D002410	WORM GEAR	1		
189851	D002420	WORM WHEEL	1		
189852	D002790	BEARING SUPPORT	1		
189609	D002930	TENSIONING SHAFT	1		
189760	D002960	RE-CALL SPRING	1		*
189619	D003190	FEEDWHEEL BODY	1		
189853	D004320	SUPPORT PLATE	1		
189854	D004330	OPENING LEVER	1		
189855	D004350	SPACER	1		
189992	8411035135	PNEUMATIC MOTOR ATLAS COPCO	1		

	§	WEARING PART	
	*	PART THAT SHOULD BE STOCKED	

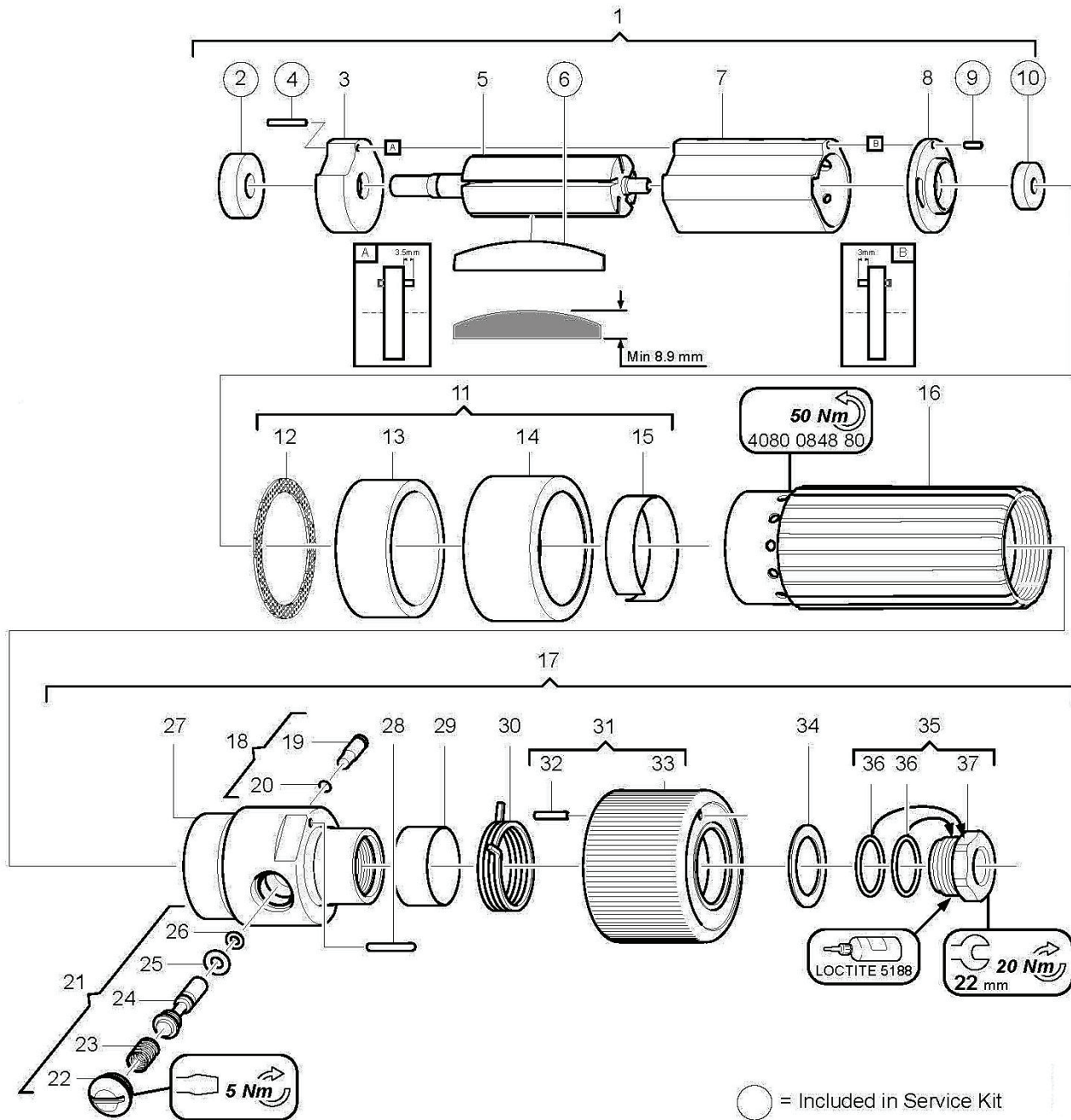
# SP3100



- LOCTITE 243
- LOCTITE 542
- 🔥 ROYAL PURPLE "NLGI 0"
- 🔥 ROYAL PURPLE "NLGI 2"
- ✘ NON FORNIBILE SINGOLARMENTE  
NOT SUPPLIED ALONE

T449941 19-32mm (3/4"-1 1/4") Ed. 07/06

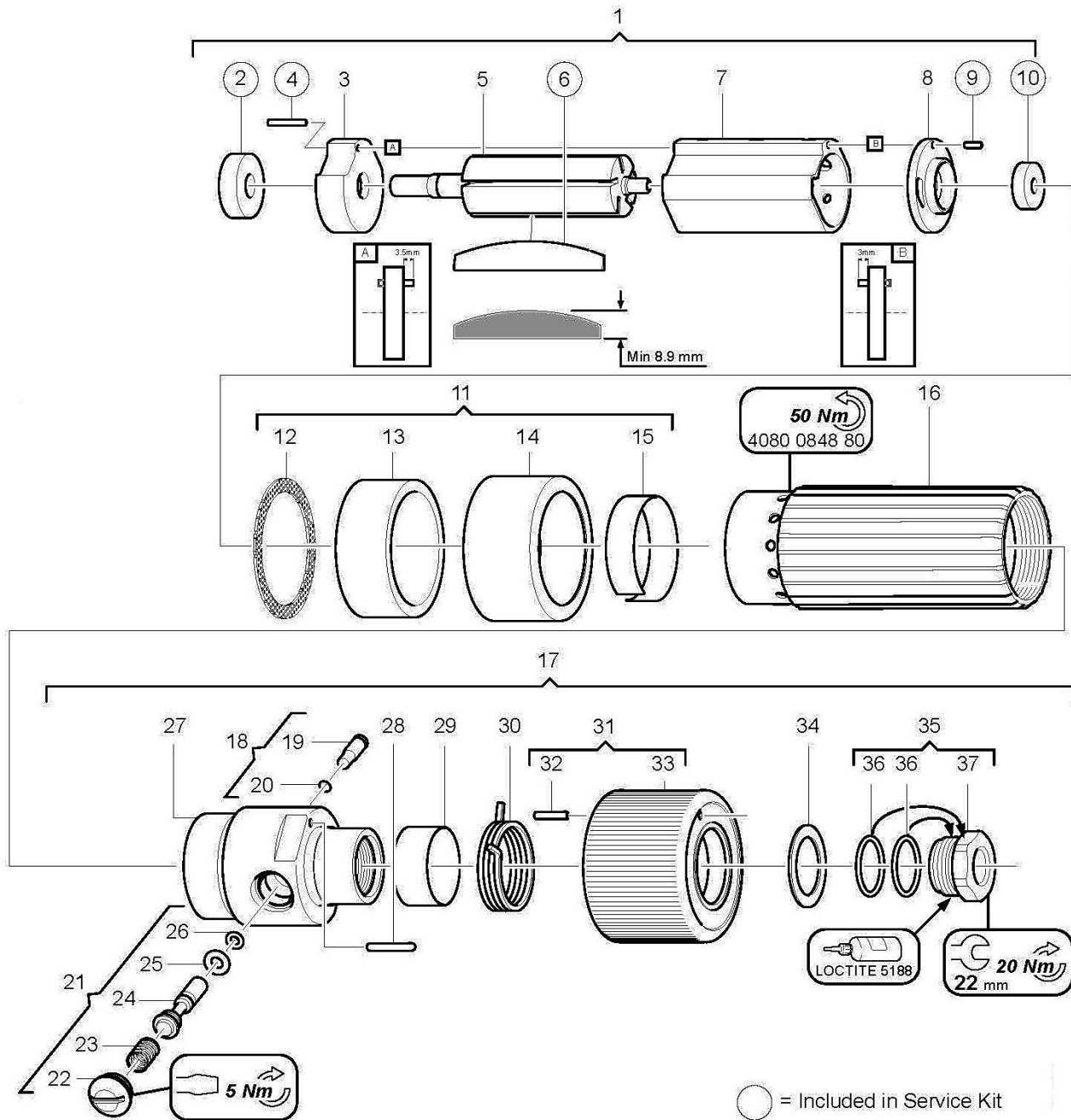
# Atlas Copco



○ = Included in Service Kit

Ref. No.	Ordering No.	Qty	Description	Part #	Remark / Included in Service kit
1(2-10)	4430 1734 81	1	Motor, compl.	207867	
2	4080 0567 03	1	Ball bearing	207961	608 / Service kit 4081 0490 90
3	-	1	End plate		
4	-	1	Pin		FRP 2x14
5	-	1	Rotor		
6	4210 2020 90	1	Vane kit		Service kit 4081 0490 90
7	-	1	Cylinder		
8	-	1	End plate		
9	-	1	Pin		CP 2x6 / Service kit 4081 0490 90
10	4080 0567 05	1	Ball bearing	206676	625-2RSH / Service kit 4081 0490 90
11(12-15)	4210 0535 91	1	Silencer, compl.	207868	
12	-	1	Silencer		

# Atlas Copco



Ref. No.	Ordering No.	Qty	Description	Part #	Remark / Included in Service kit
1(2-10)	4430 1734 81	1	Motor, compl.	207867	
2	4080 0567 03	1	Ball bearing	207961	608 / Service kit 4081 0490 90
3	-	1	End plate		
4	-	1	Pin		FRP 2x14
5	-	1	Rotor		
6	4210 2020 90	1	Vane kit		Service kit 4081 0490 90
7	-	1	Cylinder		
8	-	1	End plate		
9	-	1	Pin		CP 2x6 / Service kit 4081 0490 90
10	4080 0567 05	1	Ball bearing	206676	625-2RSH / Service kit 4081 0490 90
11(12-15)	4210 0535 91	1	Silencer, compl.	207868	
12	-	1	Silencer		

## CE DECLARATION OF CONFORMITY

Greenbridge declares under own responsibility that the under mentioned machinery, to which this declarations refers, is in conformity with **2006/42/CE** Directive and successive modifications, as well as with standards **EN12100-1 / EN12100-2**

**MODEL:**  
**Series SP3100**



**MACHINE TYPE**

**PNEUMATIC TENSIONER TOOL FOR STEEL STRAP**

**GREENBRIDGE**

6277 Heisley Road Mentor, Ohio 44060  
Tel. 440-357-1500 Fax 440-352-9553 [www.greenbridge.com](http://www.greenbridge.com)

Manufactured in Italy





